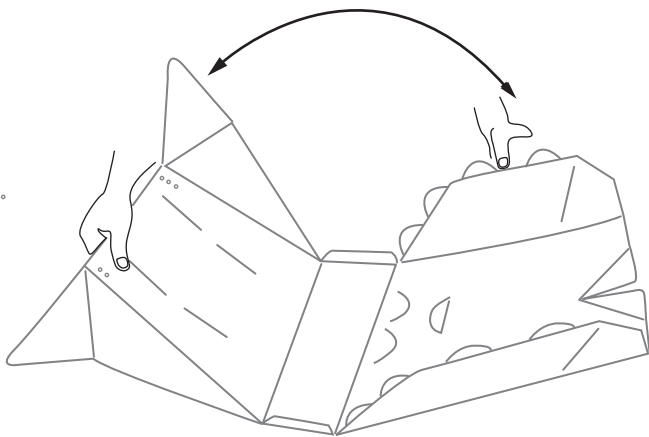
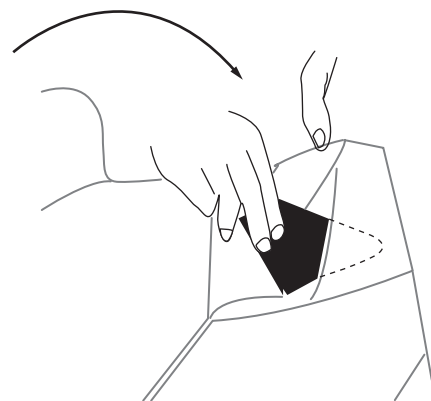


FLIPPER[®] MAIL

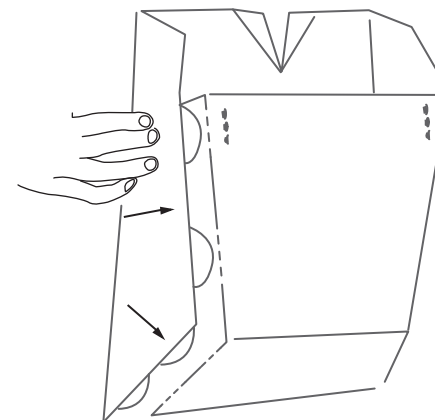
ASSEMBLING INSTRUCTIONS:



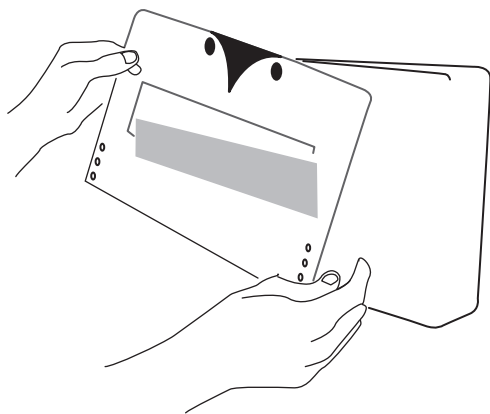
1. OPEN YOUR FLIPPER



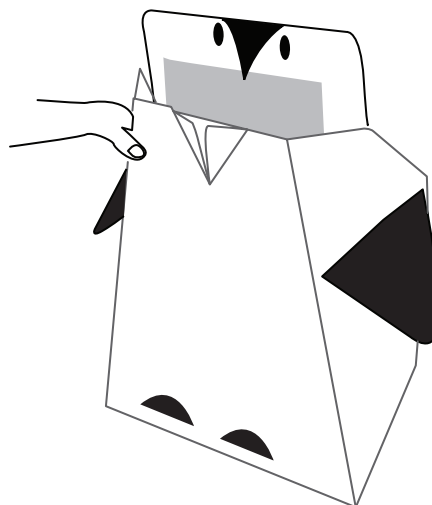
2. INSERT THE TWO PENNONS
IN THE SLITS



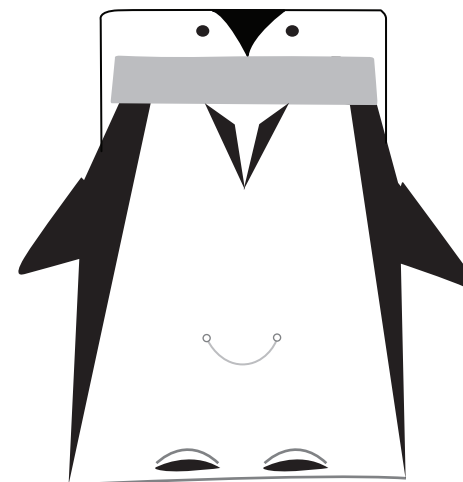
3. LOCK BEHIND



4. INSERT THE PLASTIC SUPPORT
IN YOUR POSTILUUKKU



5. JOIN THE SNAP-FASTNERS



6. HERE IS YOUR FLIPPER!